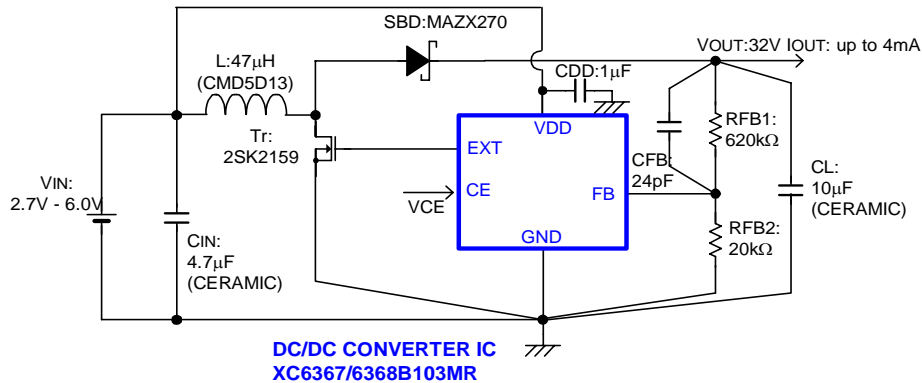


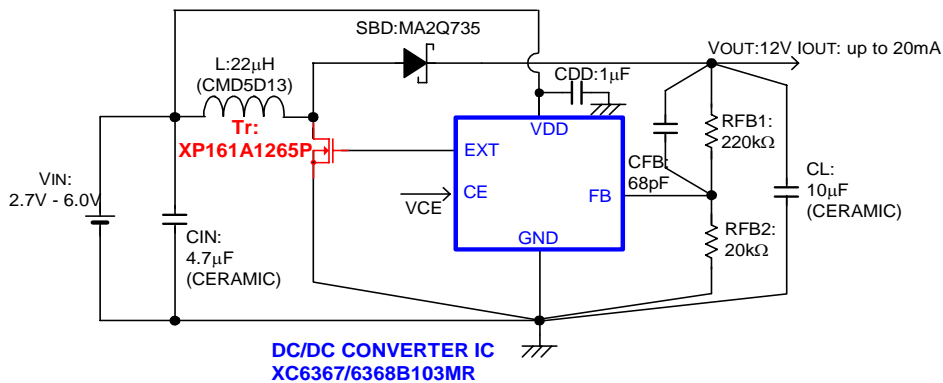
■ General Description

LCD panels require high voltages, 10.0 V or higher, as their bias voltages. Power supplies ensuring 10.0 V or higher supply voltages are expensive. However, it is possible to use the general-purpose XC6367/6368B/D series of step-up DC/DC converter ICs, with supply voltages ranging from 2.0V to 10.0 V, to construct circuits delivering high voltages.

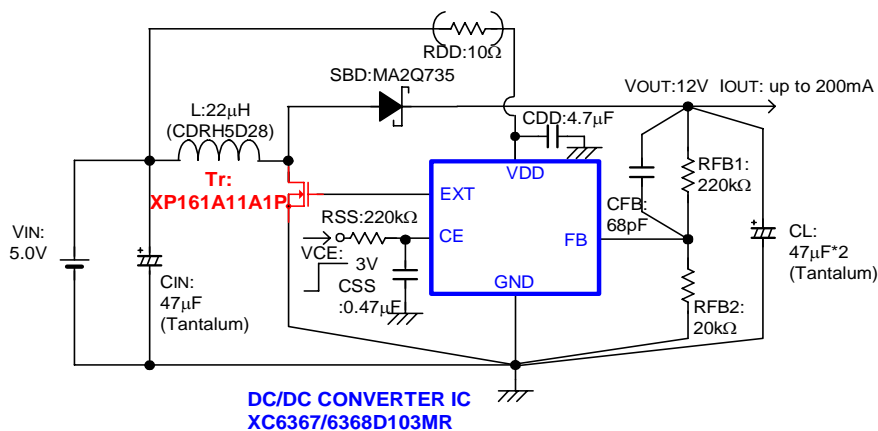
■ VOUT=32V IOUT= up to 4mA Output Circuit Example



■ VOUT=12V IOUT= up to 20mA Output Circuit Example



■ VOUT=12V IOUT= up to 200mA Output Circuit Example



* Check out thoroughly the specifications of each product, including our products and peripheral components, before use.