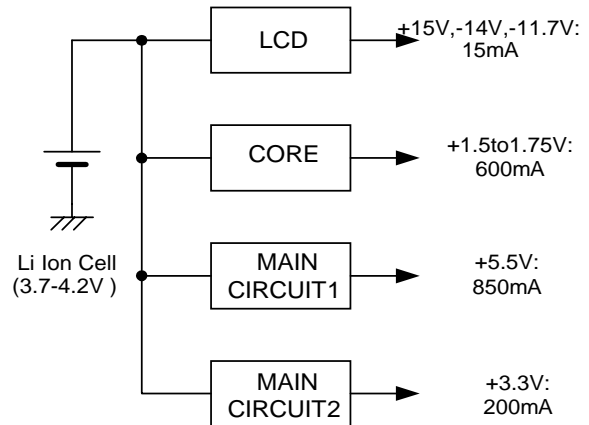


■ General Description

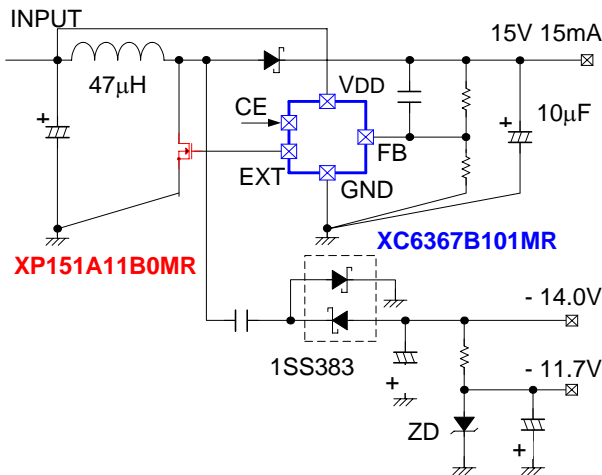
High-performance yet power-thrifty, the Intel® StrongARM processor has become a focus of attention and is incorporated in a variety of products. Torex offers power supply systems designed for StrongARM processor-based PDAs. These circuits are designed with the SA-1110 of Intel® Strong ARM processor in mind.

■ Block Diagram



■ Circuits

Fig. 1: Circuit for LCD



The example above incorporates a step-up DC/DC converter and a diode charge pump. It is also possible to use a flyback transformer for producing positive and negative output voltage.

Fig. 3 : 5.5V Main Power Supply Circuit

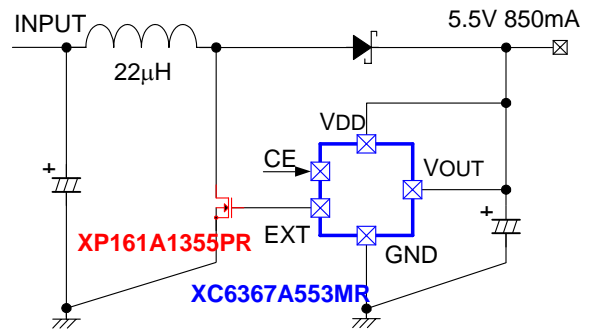


Figure 2 : Circuit for CORE

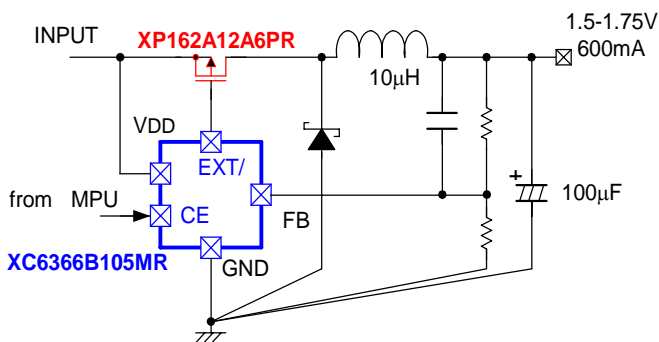
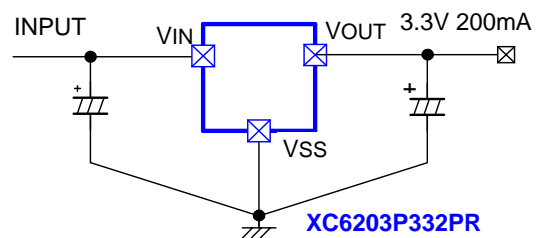


Figure 4 : 3.3V Main Power Supply Circuit



The example above is suited to applications whose available mounting areas are small. The circuit shown in Fig. 2 incorporating a step-down DC/DC converter serves as an effective solution to extending the operating time of the system.