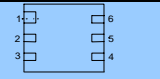

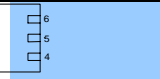

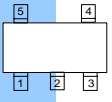
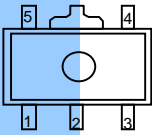
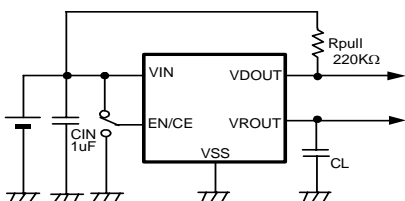


Product Name		XC6402	XC6403	XC6404	XC6405	XC6413	XC6414
VR+VD	Input Voltage Range	1.5V ~ 6.0V		2.0V ~ 6.0V		2.0V ~ 10.0V	
	Supply Current (TYP.)		35μA		90μA		35μA
VR	Output Voltage Range	0.8V ~ 5.0V	0.9V ~ 5.6V	0.9V ~ 5.1V		0.9V ~ 5.5V	
	Output Voltage Accuracy				2.0%		
	Transient Response		Same as XC6219		Same as XC6204		Same as XC6219
	PSRR (TYP.)	60dB@1kHz		65dB@10kHz			
	Max. Output Current	700mA	300mA	500mA		300mA	500mA
	Current Limit (TYP.)	800mA	380mA	600mA		380mA	600mA
	Short-Circuit Current (TYP.)	30mA		50mA			30mA
	ON Resistance @ 3.0V (TYP.)	0.5Ω			2.0Ω		
VD	Detect Voltage Range	0.8V ~ 5.0V		0.9V ~ 5.5V		0.9V ~ 6.0V	
	Detect Voltage Accuracy				2.0%		
	Hysteresis Range			x 1.02 ~ 1.08			
	Output			N-channel			
	Delay Function (*1)		Set by external capacitor (No EN, CE, VSEN function is available)				
	VSEN Function (*1) (VD External Monitoring)	Not Available		(No EN function, CE function, delay function is available)			
	EN Function (*1)		Available (No CE function, VSEN function, delay function available)				
	CE Function (*1)	Not Available	Available (No EN function, VSEN function, delay function is available)				
Others	CE/EN Logic (*1)		H or L				
	CE/EN pull_R (*1)		Both with/without CE/EN pull_R are available				
	Package		SOT-25, SOT-89-5, USP-6B				
	Pin Configuration (Base)		XC6204 / XC6209 / XC6219				
	Wafer Type		P				
Features (*2)	VR Dropout Voltage (100mA)	50mV	200mV	200mV	200mV	200mV	200mV
	Input Voltage Operation	1.5V ~	2.0V ~	2.0V ~	2.0V ~	2.0V ~	2.0V ~
	Output Current	700mA	300mA	500mA	500mA	300mA	500mA
	Supply Current	35uA	35uA	35uA	90uA	35uA	35uA
	Ceramic Capacitors	Yes	Yes	Yes	Yes	Yes	Yes
Applications	Mobile phones	Mobile phones	Mobile phones	Mobile phones	Mobile phones	Mobile phones	Mobile phones
	PDA's	PDA's	VCRs	VCRs	PDA's	Video Cameras	
	Portable Games	Portable Games	HDD Drives	HDD Drives	Portable Games	HDD Drives	
	Cameras	Cameras	DVD-ROMs	DVD-ROMs	Video Cameras	DVD-ROMs	
	Cordless Phones	Cordless Phones	CD-ROMs	CD-ROMs	Cordless Phones	CD-ROMs	
Pin Configuration	USP-6B	 1.EN, Cd, 2.NC, 3.VIN, 4.VSS, 5.VROUT, 6.VDOUT	 1.EN/CE/VSEN/Cd, 2.NC, 3.VIN, 4.VROUT, 5.VSS, 6.VDOUT		 1.EN/CE/VSEN/Cd, 2.NC, 3.VIN, 4.VROUT, 5.VSS, 6.VDOUT		
	SOT-25			 1.VIN, 2.VSS, 3.EN/CE/VSEN/Cd, 4.VDOUT, 5.VROUT (EN type and Cd type only for the XC6402 series)			
	SOT-89-5			 1.VIN, 2.VSS, 3.VROUT, 4.VDOUT, 5.EN/CE/VSEN/Cd (EN type and Cd type only for the XC6402 series)			

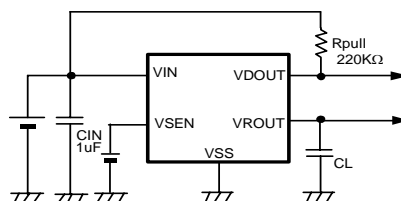
(*1) Optional function

(*2) Please refer to individual data sheets for details of the optional functions available.

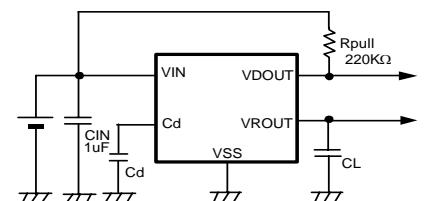
TYPICAL APPLICATION CIRCUITS



XC6402/03/04/05/13/14C series (EN function)
XC6403/04/05/13/14D series (CE function)



XC6403/04/05/13/14 series
(VSEN function)



XC6402/03/04/05/13/14F series
(External delay function)